

Health indicators

England and Wales

Figure A Population change (mid-year to mid-year)

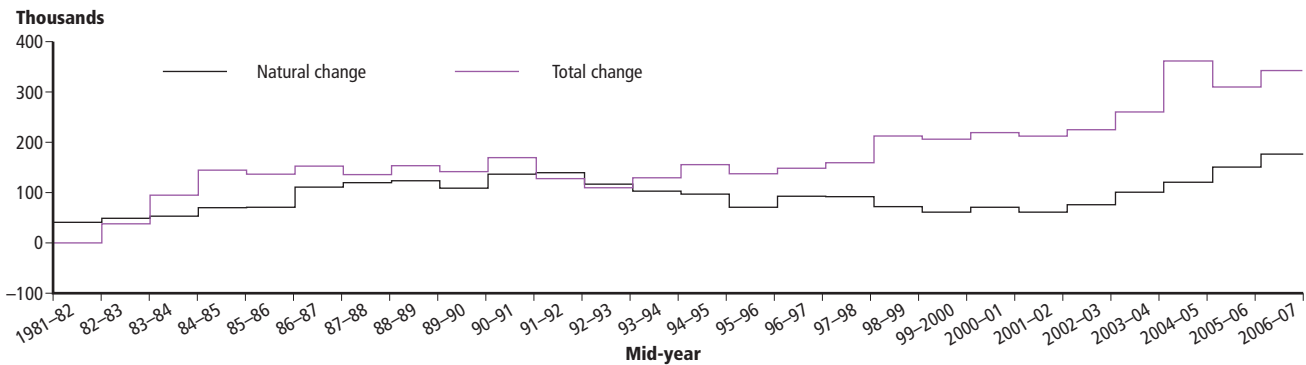


Figure B Age-standardised mortality rate¹

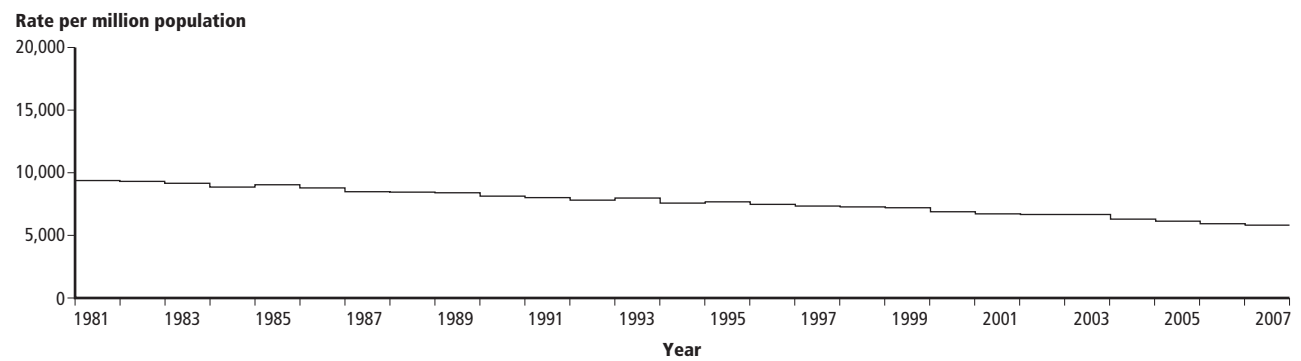


Figure C Infant mortality (under 1 year)

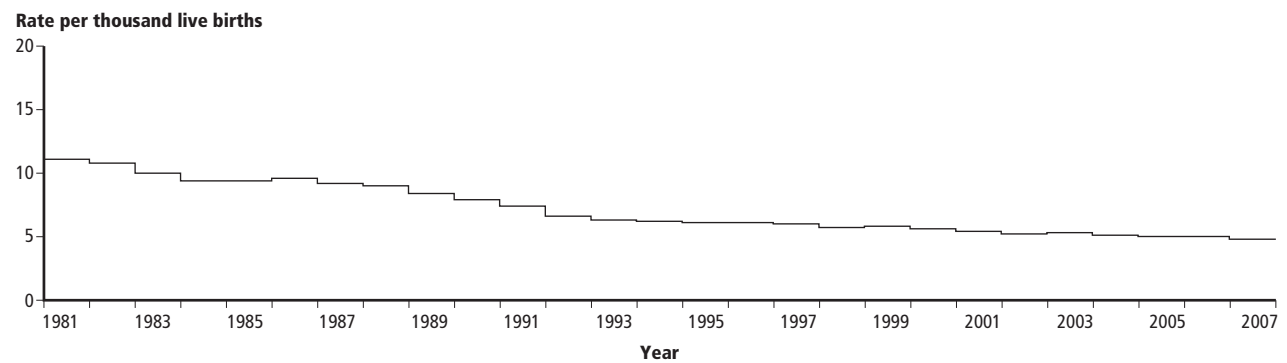
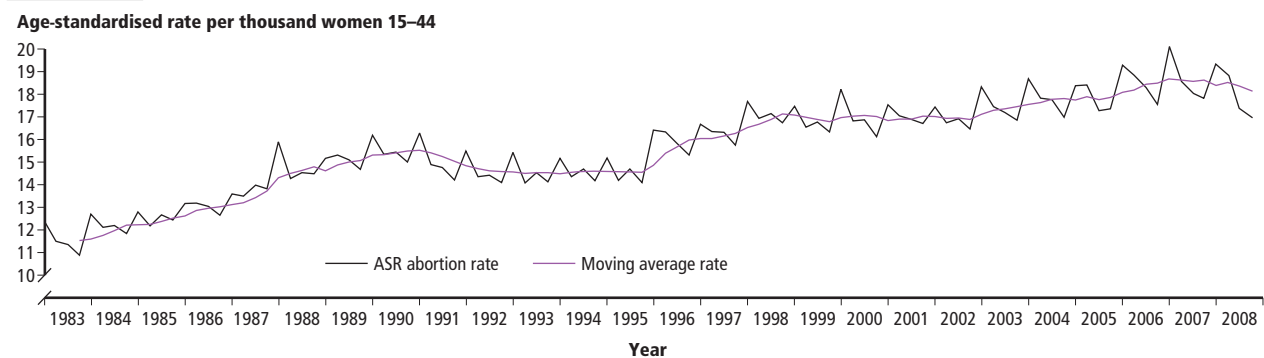


Figure D Age-standardised quarterly abortion rates – residents²



1 The age-standardised mortality rate for 2007 is based on mid-2007 population estimates published on 21 August 2007.

2 Rates for 2008 are based on projected projections.